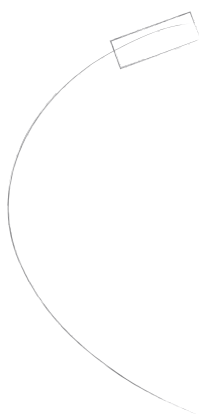




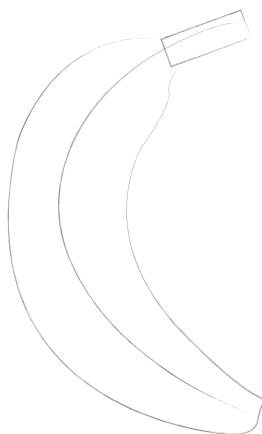
How to draw:

BANANA JOE

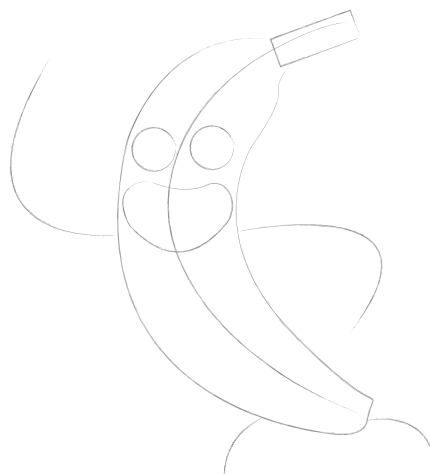
You will need: A pencil, a piece of plain paper, an eraser, black marker pen and colouring pens. You should remember to draw lightly to begin with so you can rub out your rough lines easily.



Start by drawing Joe's basic banana shape. To do this first draw a curved line, with a rectangle on top.



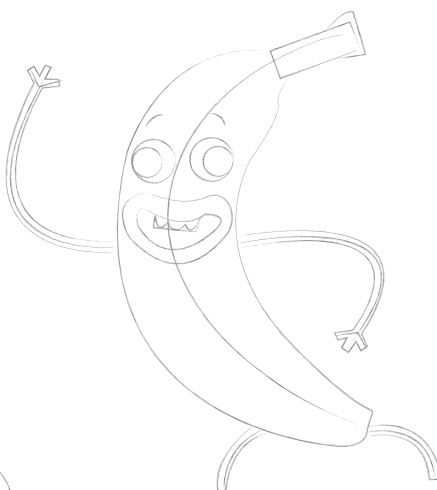
Using this as a rough guide draw around the line to make the basic banana shape.



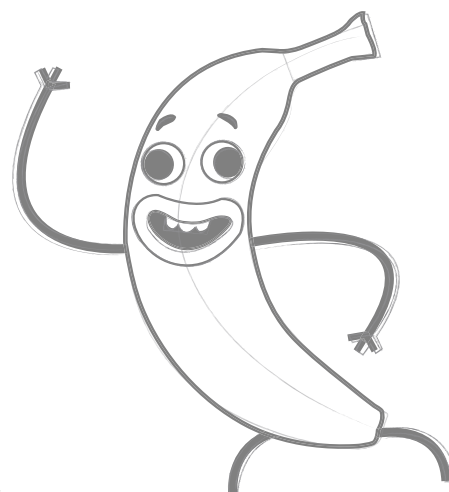
Add in some guide lines for the arms and legs. Then draw the eyes and lips.



Draw another circle in his eyes to make them googly! Then add the inside of his mouth and rough teeth outlines. Don't forget to draw the fingers!



Define Joe's facial features. Include his teeth and eye brows. Outline his arms and legs to make them thicker. The top of the banana should go out slightly, shown in the picture above.



Draw over Banana Joe's outline with a thick black marker. Rub out the guides and any sketchy lines. Colour him in and BANANANA... Banana Joe!



TM & © 2013 Cartoon Network